



Spray-Lock

PREMIUM ECO ADHESIVES

It is the *installer's responsibility* to perform a bond test, prior to the installation, to ensure compatibility between the adhesive and material being installed.

SL-95

Flooring Adhesive

For Compatible
VCT, Recycled Rubber
Flooring, and
Needlefelt Carpet Tiles

1

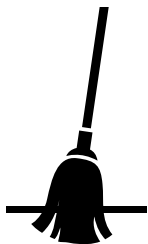
20°C



- Store adhesive at a minimum temperature of 20°C (68°F) for 24 hours prior to installation.
- Condition flooring per manufacturer's recommendations.

NOTE: SL-95 can withstand concrete moisture emissions up to 8 lbs/24 hrs/1000 ft² and 98% RH and pH must be no more than 11.

2



- Ensure substrate, flooring, and surrounding areas are clean and dust-free.
- Damp-mop substrate if dust is present.
- Only use Portland based patching and leveling compounds.

3



- Wipe hand across surface.
- If dust transfers, substrate is not clean.

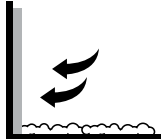
4



HVAC

- HVAC must be continuously operated for a minimum of 72 hours at a temperature of no less than 20°C (68°F) prior to installation.

5



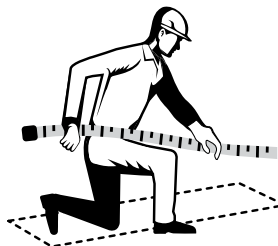
- Protect from overspray with a spray shield, drop cloths, paper, or masking.

6



- Shake aerosol can well.
- Remove white cap.

Tip for first-time users:



- Measure and mark out an area prior to using the first can.
- ▶ **VCT Flooring:**
15.8 m² for a porous subfloor,
18.6 m² for a non-porous subfloor.
- ▶ **Recycled Rubber & Needlefelt Carpet Tiles:**
9.2 m² for a porous subfloor,
11.6 m² for a non-porous subfloor.
- Spray out one full adhesive can completely within marked area to achieve a visual reference.

7



- Stand straight up to spray. Hold can upside down, approximately 50-76 cm (20-30 inches) from the substrate, aim at floor and press tip with finger.
- Walk right to left smoothly to achieve results in photo on reverse side. Adhesive should spray out in a wide mist and fall similar to snow.

NOTE:

Spraying in a sweeping motion may result in an inconsistent spray pattern.

Excess buildup or inconsistent spray pattern on substrate may cause telegraphing.



Avoid extremely heavy application.

DO NOT ALLOW PRODUCT TO FREEZE.

VCT FLOORING

COVERAGE
15.8-18.6 m²

RECYCLED RUBBER
& NEEDLEFELT

COVERAGE
9.2-11.6 m²

8



- To ensure optimal spray pattern, remove any adhesive buildup that may occur during the application process.

9



- If overspray occurs, it may be removed with a damp cloth while the adhesive is still wet.
- Use mineral spirits for dry overspray.

10



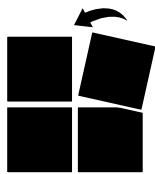
- Allow adhesive to dry until there is no adhesive transfer when lightly touched (10-20 min).
- High humidity and/or low temperature increases tack time.

11



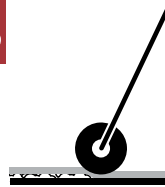
- Open time after application is 2 hours. While open, ensure that adhesive is not contaminated by dust.

12



- Follow flooring manufacturer's recommendations for installation.
- Position flooring, ensure proper alignments before application of pressure. Reposition as necessary.

13



- Roll flooring with a 34-45 kg (75-100 lb) roller immediately after installation to complete the bonding process.
- After rolling, floor is ready for all access.

Suitable Substrates

SL-95 bonds compatible flooring to the following properly prepared smooth, flat, dust-free substrates:

- Concrete
- Underlayment grade plywood
- Metal
- Fiberglass
- Existing VCT
- Existing LVT
- Existing LVP

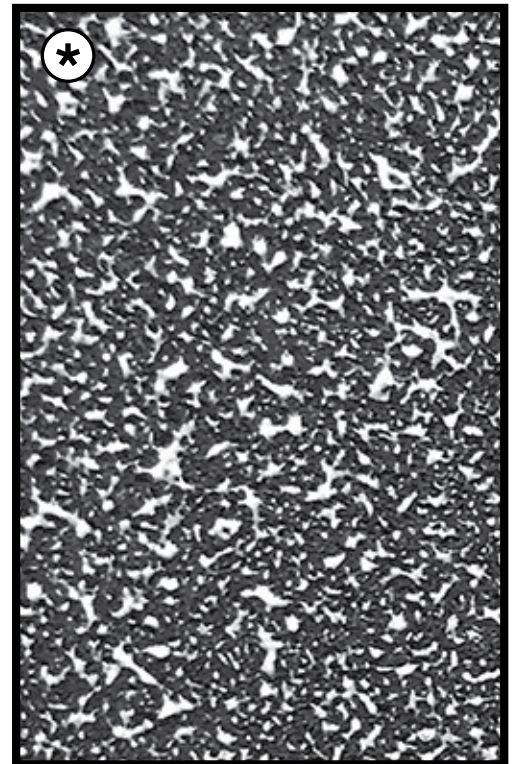
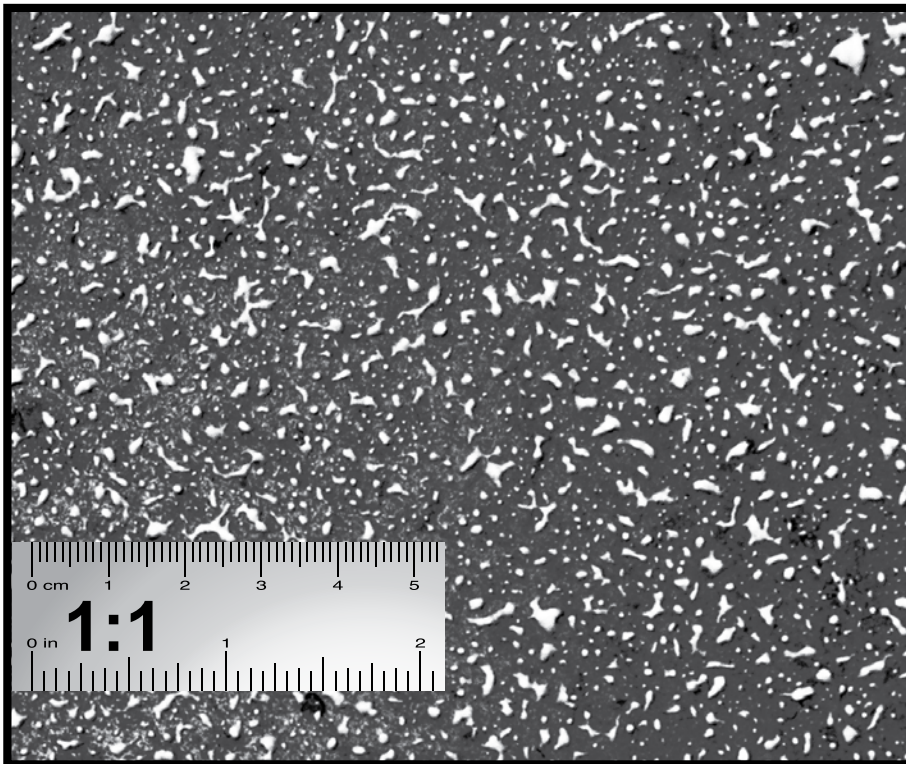
VCT FLOORING

COVERAGE
per can:
15.8-18.6 m²

RECYCLED RUBBER
& NEEDLEFELT *

COVERAGE
per can:
9.2-11.6 m²

Match spray pattern by placing guide on the floor.



WARNING: Pressurised container: May burst if heated. If medical advice is needed, have product container or label at hand. KEEP OUT OF REACH OF CHILDREN. Keep away from heat, hot surfaces, sparks, open flames and other ignition sources. No smoking. Do not pierce or burn, even after use. Protect from sunlight. Do not expose to temperatures exceeding 50°C (122°F).

FIRST AID: In case of contact with eyes, flush thoroughly with water. If irritation persists, get medical attention. For skin contact, wash with soap and water. If ingested, do not induce vomiting. Contact physician.



+0°C